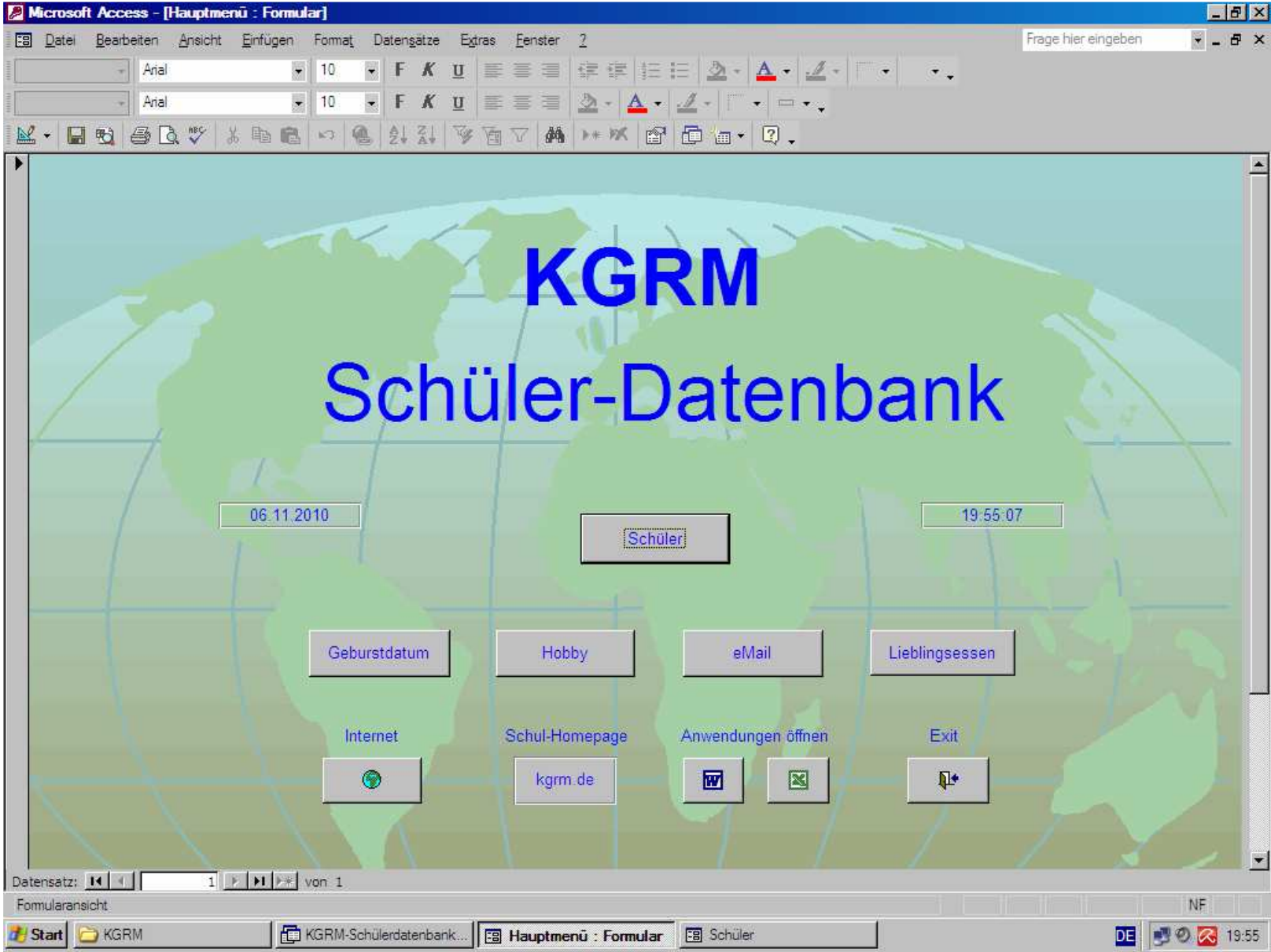
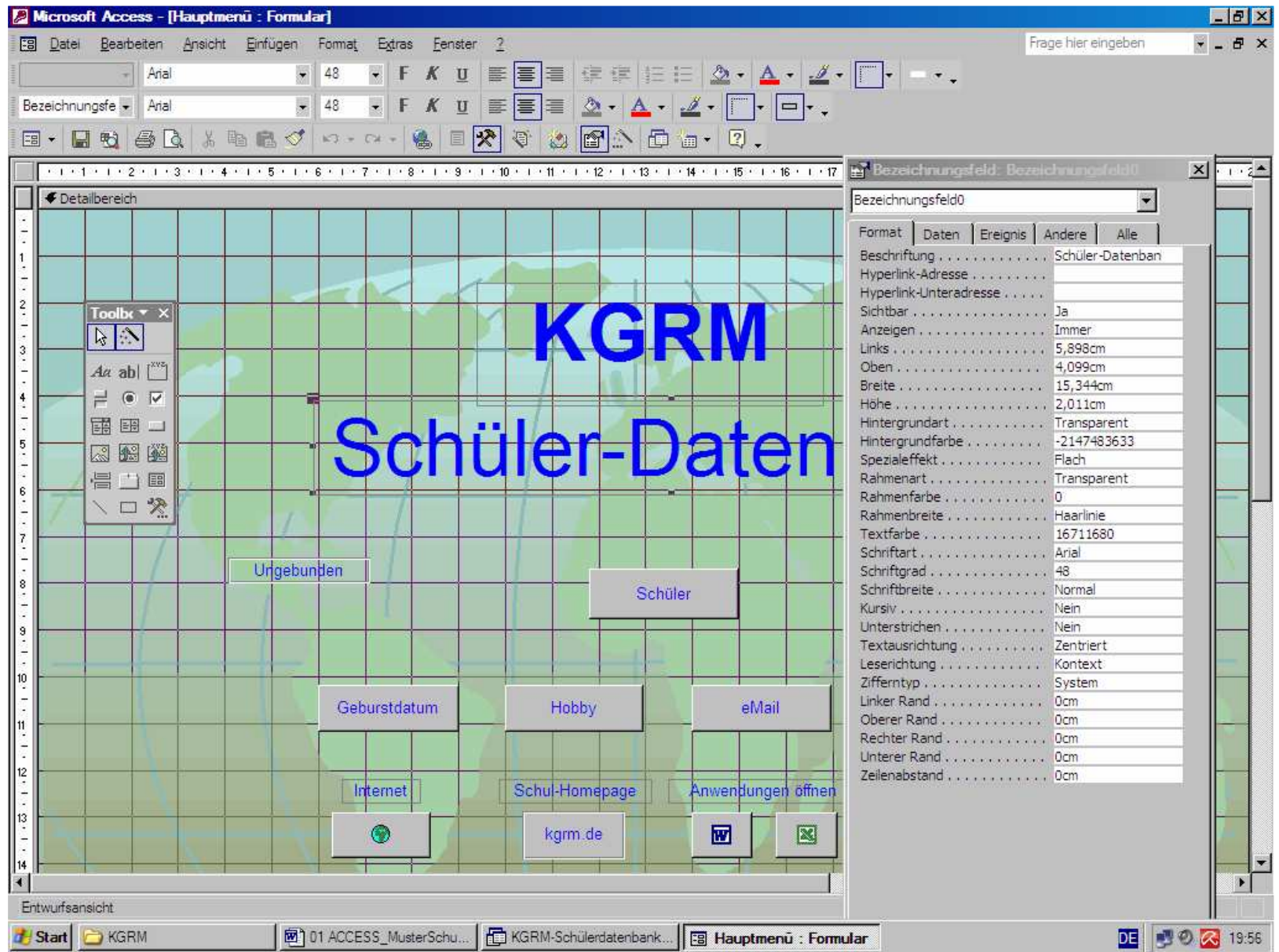


Formular 1
Benutzeransicht
„Hauptmenü“



Formular 1
Entwurfsansicht
„Hauptmenü“



Formular 1
Code-Fenster:
Algorithmus der
Ereignisprozedur
„Stammdaten
eingeben“

The screenshot shows the Microsoft Visual Basic IDE for a project named "KGRM-Schülerdatenbank". The main window displays the code for "Form_Essen (Code)". The code is as follows:

```
(Allgemein) (Deklarationen)
Option Compare Database

Private Sub Daten_öffnen_Click()
On Error GoTo Err_Daten_öffnen_Click

    Dim stDocName As String
    Dim stLinkCriteria As String

    stDocName = "Schüler"
    DoCmd.OpenForm stDocName, , , stLinkCriteria

Exit_Daten_öffnen_Click:
Exit Sub

Err_Daten_öffnen_Click:
MsgBox Err.Description
```

The Properties window for "Daten öffnen" (CommandButton) is visible, showing the "EventProcPrefix" property set to "Daten_öffnen".

The code for "Form_Hauptmenü (Code)" is also visible, showing the "Daten_öffnen_Click" event procedure:

```
(Allgemein) (Deklarationen)
Option Compare Database

Private Sub Befehl146_Enter()

End Sub

Private Sub Bezeichnungsfeld41_Click()

End Sub

Private Sub Daten_öffnen_Click()
On Error GoTo Err_Daten_öffnen_Click

    Dim stDocName As String
    Dim stLinkCriteria As String

    stDocName = "Schüler"
    DoCmd.OpenForm stDocName, , , stLinkCriteria

Exit_Daten_öffnen_Click:
```

The Windows taskbar at the bottom shows the Start button, the "KGRM" folder, and several open applications including "Demo Schülerdatenbank...", "KGRM-Schülerdatenbank...", "Hauptmenü: Formular", and "Microsoft Visual Basi...". The system clock shows 17:18.

Formular 2
Benutzeransicht:
„Stammdaten eingeben“

The screenshot shows the Microsoft Access application window titled "Microsoft Access - [Schüler]". The menu bar includes "Datei", "Bearbeiten", "Ansicht", "Einfügen", "Format", "Datensätze", "Extras", and "Fenster". The toolbar contains various icons for file operations and data management. The main window displays a form with a world map background. The form fields are as follows:

Nachname	Kunze	männl	<input checked="" type="checkbox"/>
Vorname	Fritz	weibl	<input type="checkbox"/>
Straße	Langweg 87		
PLZ	68519		
Ort	Viernheim		
Geburtsdatum	31.12.1984		
Bundesland	Hessen		
Telefon	(06204) 666334		
Email-Adresse	friku@gmx.de		
Hobby	Lesen		
Spitzname	Seneca		
Lieblingsfach	Latein		
Negativfach	Sport		
Nationalität	deutsch		

Additional elements on the form include a "Stammdaten aktualisieren!" button, a "Geburtsjahr korrigieren!" tooltip pointing to the birth date field, and navigation buttons labeled "Gehe zu:", "Menü", and "Exit:". The status bar at the bottom shows "Datensatz: 3 von 5" and "Formularansicht". The Windows taskbar at the very bottom shows the Start button and several open applications: "Schüle...", "Essen", "Haupt...", "Schüler", "Demo...", and "Micros...". The system clock shows "07:47".

Formular 3
Benutzeransicht
„Abfrage
Lieblingessen“

